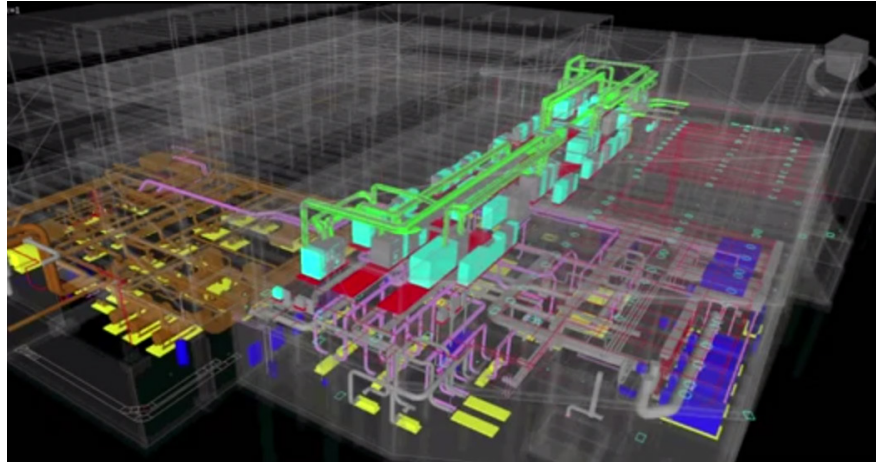


## GSA BIM PROGRAM SUPPORT

Philadelphia, Pennsylvania

services provided  
BIM PROGRAM MANAGEMENT

owner  
U.S. GENERAL SERVICES ADMINISTRATION



Procon provides a wide range of technical consulting services to the General Services Administration (GSA) to assist them with their nationwide Building Information Modeling (BIM) programs and goals.

As the nation's largest landlord, GSA was looking for program support to help them manage their owned assets and construction projects with the use of Building Information Modeling (BIM).

In addition to assisting in constructability reviews, clash detection, sequencing and budgeting construction projects, BIM is a powerful tool for facilities operation and maintenance throughout the life cycle of the building, its systems, and other components.

### Key Responsibilities

- Developing requirements for software solutions to integrate multiple building management systems including BIM, Energy Management Systems (EMS), Building Automation Systems (BAS), and Computerized Maintenance Management Systems (CMMS).
- Managing processes to develop requirements for a vendor solution to classify, map, and standardize common data elements from multiple enterprise-level applications as they relate to BIM including ePM, CMMS, BAS, and EMS.
- Assist with vendor and product procurement strategies and implementation including developing requests for proposals, managing source selection process, providing technical advice on offerors' compliance with scope and performance standards, and managing delivery of tasks upon award of contracts.
- Developing and revising policies, standards, and guidelines for the GSA's BIM Program in its Facilities Standards for the Public Building Service (P100), GSA BIM Guides, and Division One Construction Contract Templates.